

# Appendix

## A.1 System Requirements

### A.1.1. Macintosh

#### Macintosh Minimum Requirements

MacOS 7.1

68040 Processor

16 MB RAM

35 MB Hard Disk Space

Color Display running at least 256 colors.

#### Macintosh Recommended Requirements

120 MHz PowerPC or better

MacOS 8.1 or higher

32 MB RAM or higher

35 MB Hard Disk Space

Color Display running 'thousands of colors' or more

QuickTime™ 3.0 or higher

### A.1.2 Windows

#### Windows Minimum Requirements

Windows 95, 98, Millennium Edition, NT 4.0 or Windows 2000

Pentium-Class Processor

16 MB RAM

30 MB Hard Disk Space

VGA Display with at least 256 colors

#### Windows Recommended Requirements

Windows 95, 98, Millennium Edition, NT 4.0 or Windows 2000

233 MHz Pentium-Class Processor or better

64 MB RAM

30 MB Hard Disk Space

SVGA Display with 16 bit color or better

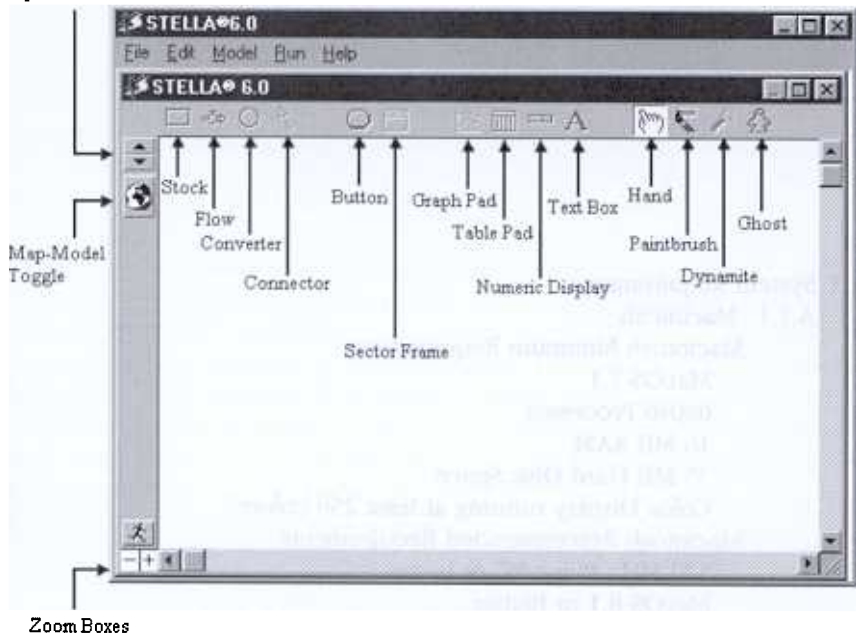
SoundBlaster or compatible sound card

QuickTime™ 3.0 or higher

A.2 Quick Help Guide\*

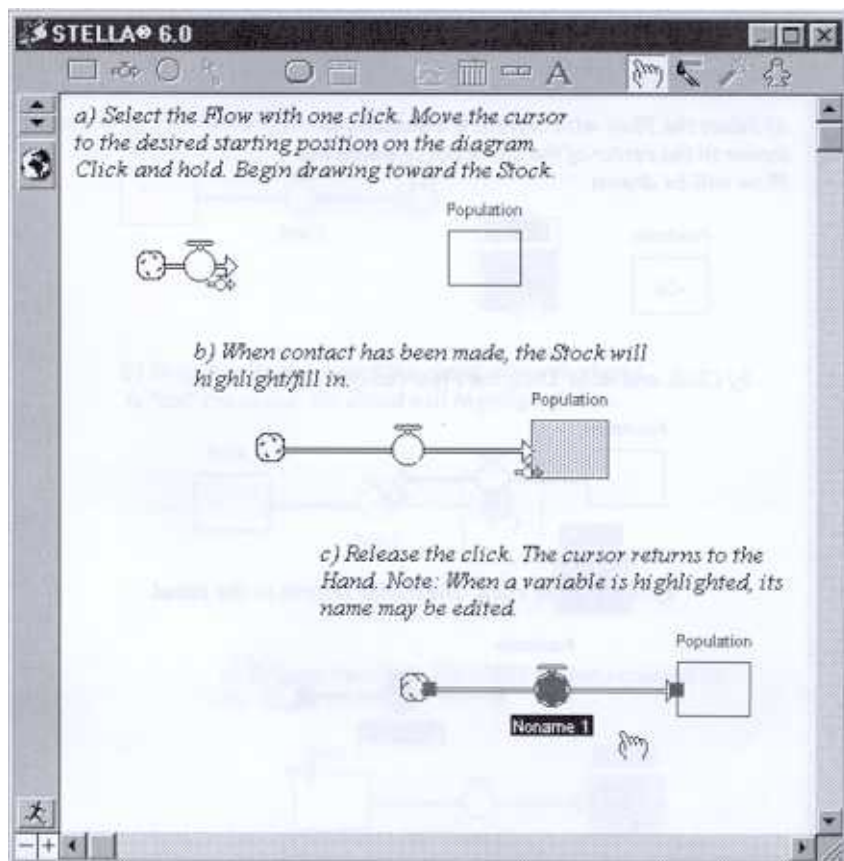
A.2.1 Overview of STELLA 6.0 Operating Environment

Interface/Map-Model/  
Equations Arrows

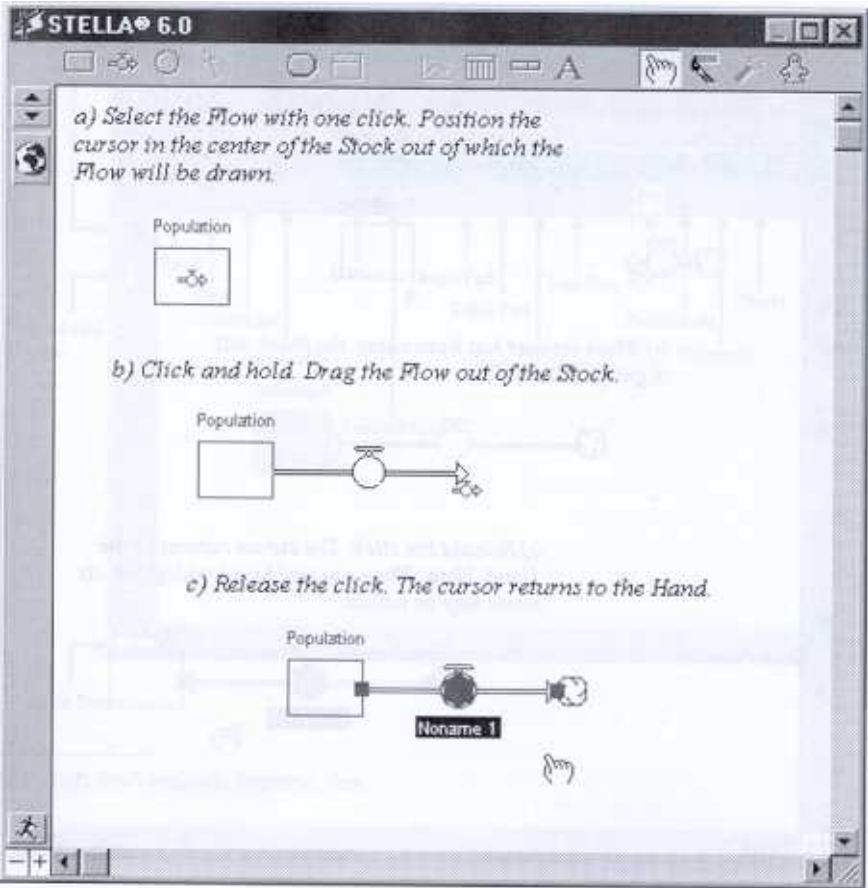


\*By High Performance Systems, Inc.

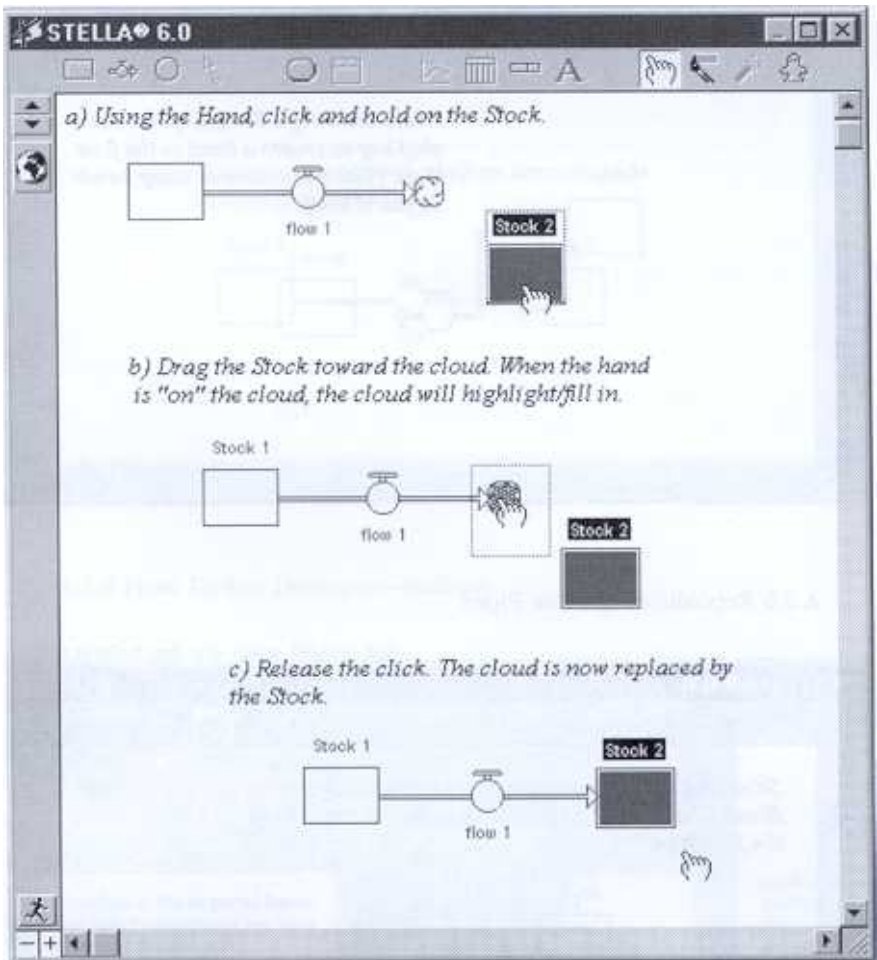
## A.2.2 Drawing an Inflow to a Stock



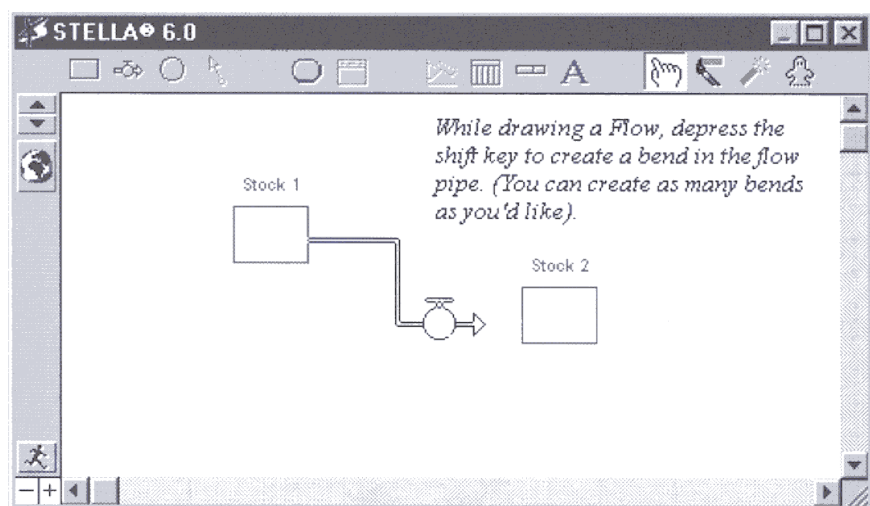
A.2.3 Drawing an Outflow from a Stock



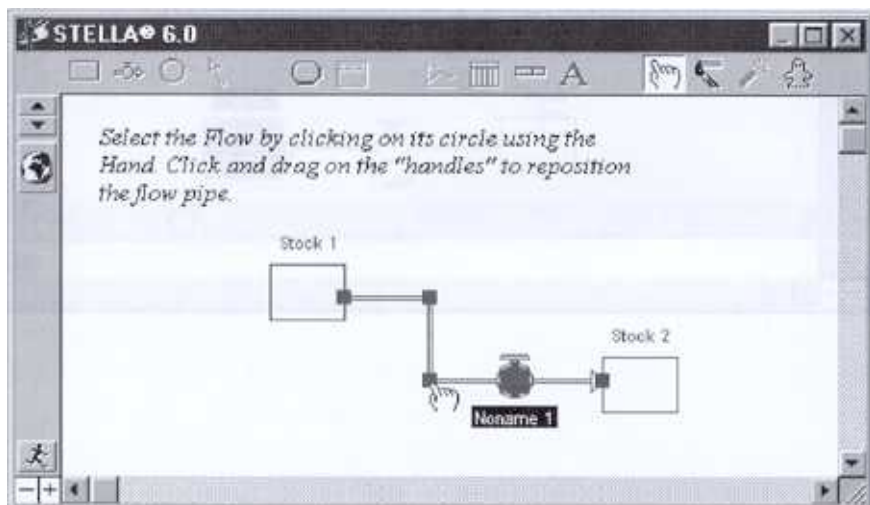
## A.2.4 Replacing a Cloud with a Stock



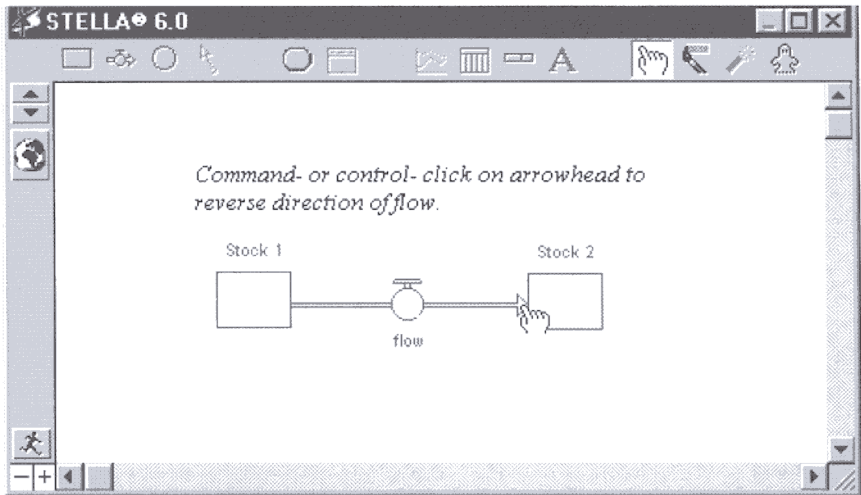
## A.2.5 Bending Flow Pipes



## A.2.6 Repositioning Flow Pipes

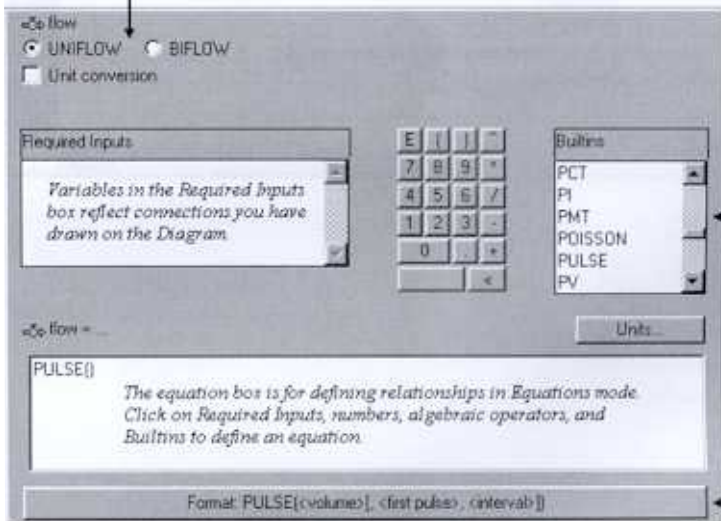


## A.2.7 Reversing Direction of a Flow

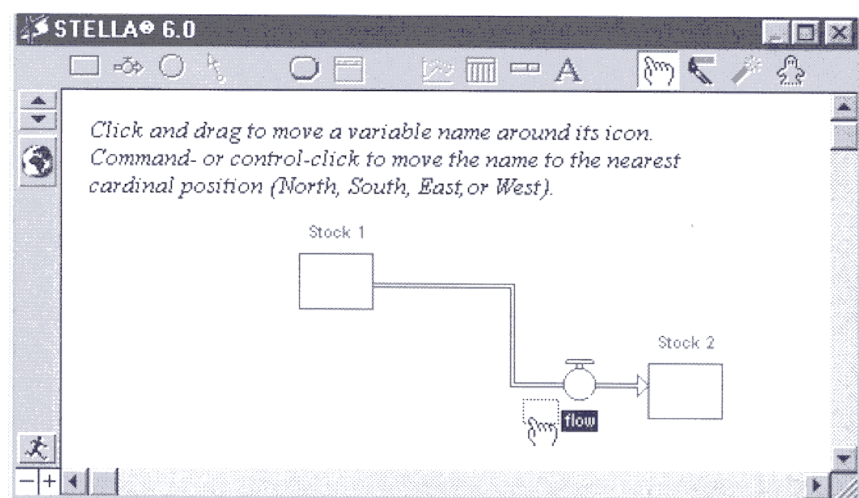


## A.2.8 Flow Define Dialogue—Builtins

Click to select unflow or bflow. Uniflows flow in one direction only; biflows can flow in either direction.

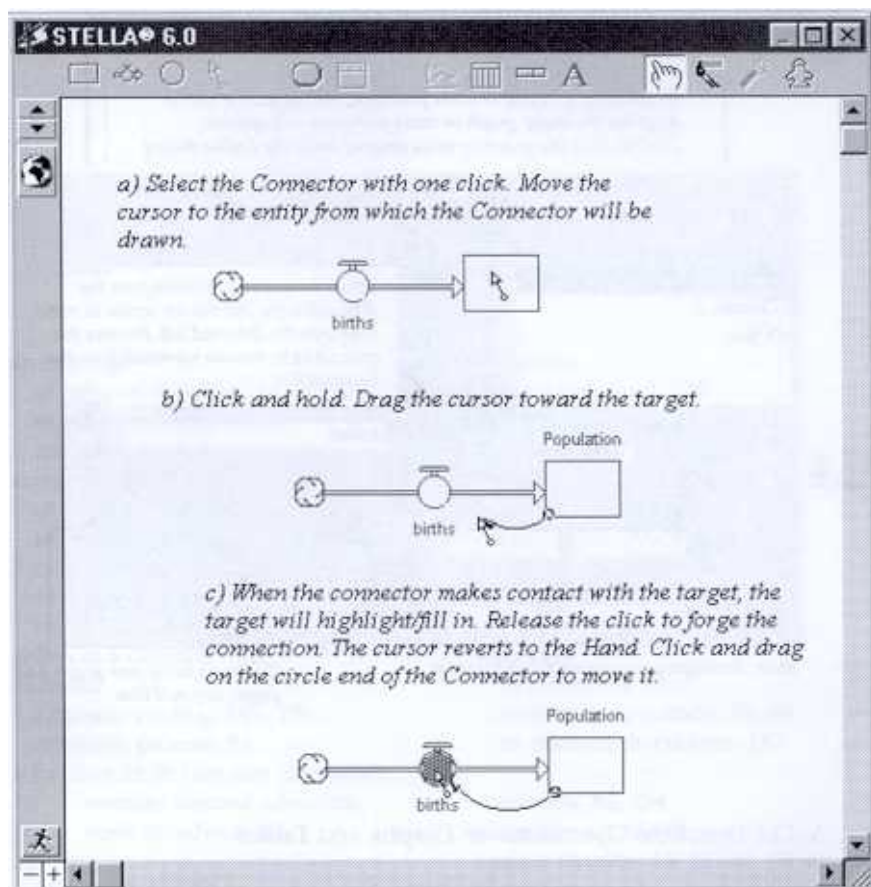


## A.2.9 Moving Variable Names

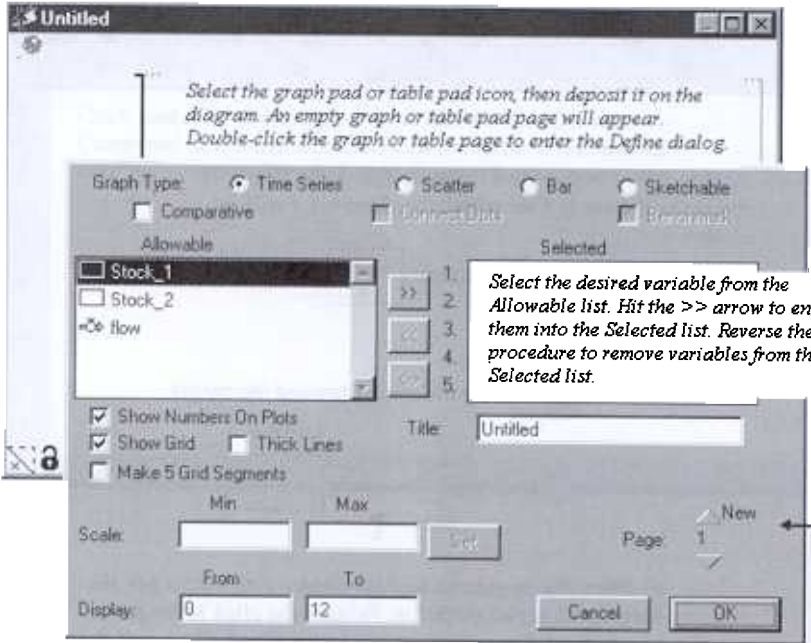




## A.2.10 Drawing Connectors



A.2.11 Defining Graphs and Tables



*Select the graph pad or table pad icon, then deposit it on the diagram. An empty graph or table pad page will appear. Double-click the graph or table page to enter the Define dialog.*

Graph Type: ☒ Time Series ☐ Scatter ☐ Bar ☐ Sketchable  
☐ Comparative ☐ Dynamic Data ☐ Barstack

Allowable: ☒ Stock\_1 ☐ Stock\_2 ☐ flow

Selected:

1. 2. 3. 4. 5.

*Select the desired variable from the Allowable list. Hit the >> arrow to enter them into the Selected list. Reverse the procedure to remove variables from the Selected list.*

☒ Show Numbers On Plots ☒ Show Grid ☐ Thick Lines  
☐ Make 5 Grid Segments

Title: Untitled

Scale: Min: Max: [Set]

Display: From: To: [0] [12]

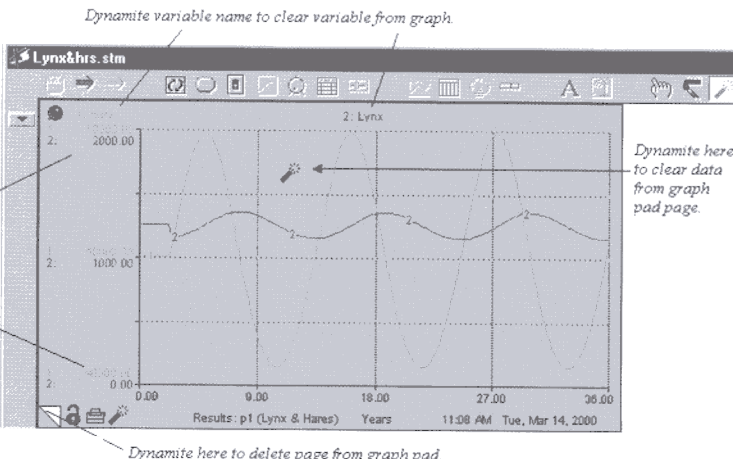
Page: 1 [New] [Previous]

[Cancel] [OK]

*Note: Analogous operations for Table Pads.*

*Create as many new graph pad pages as you'd like.*

A.2.12 Dynamite Operations on Graphs and Tables



*Dynamite variable name to clear variable from graph.*

*Dynamite here to clear data from graph pad page.*

*Dynamite max or min value to revert to default scale for variable.*

*Dynamite here to delete page from graph pad*

Results: p1 (Lynx & Hares) Years 11:08 AM Tue, Mar 14, 2000

*Note: Analogous operations for Table Pads.*